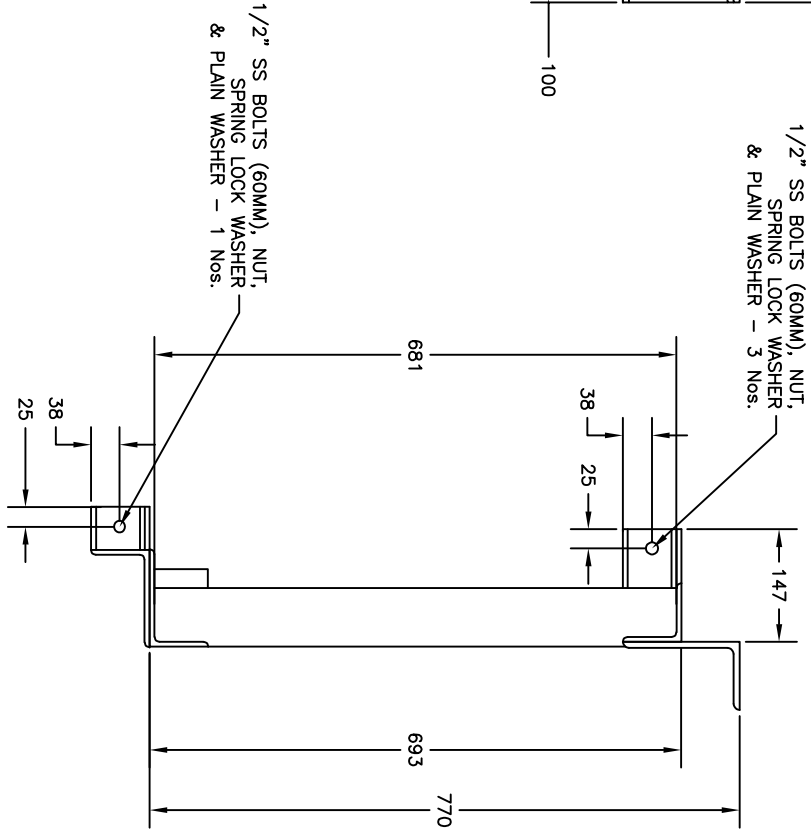
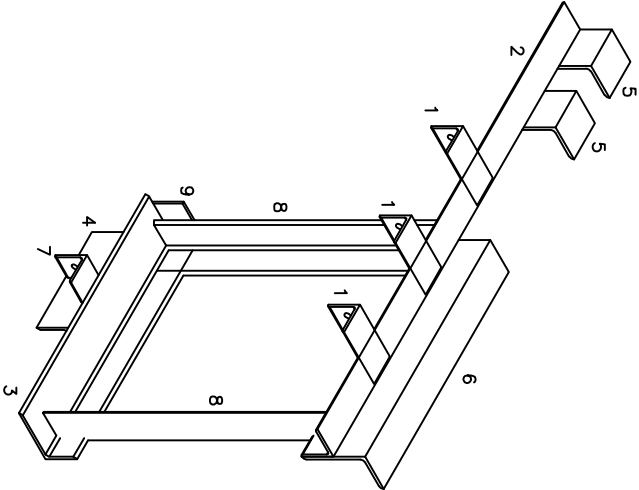
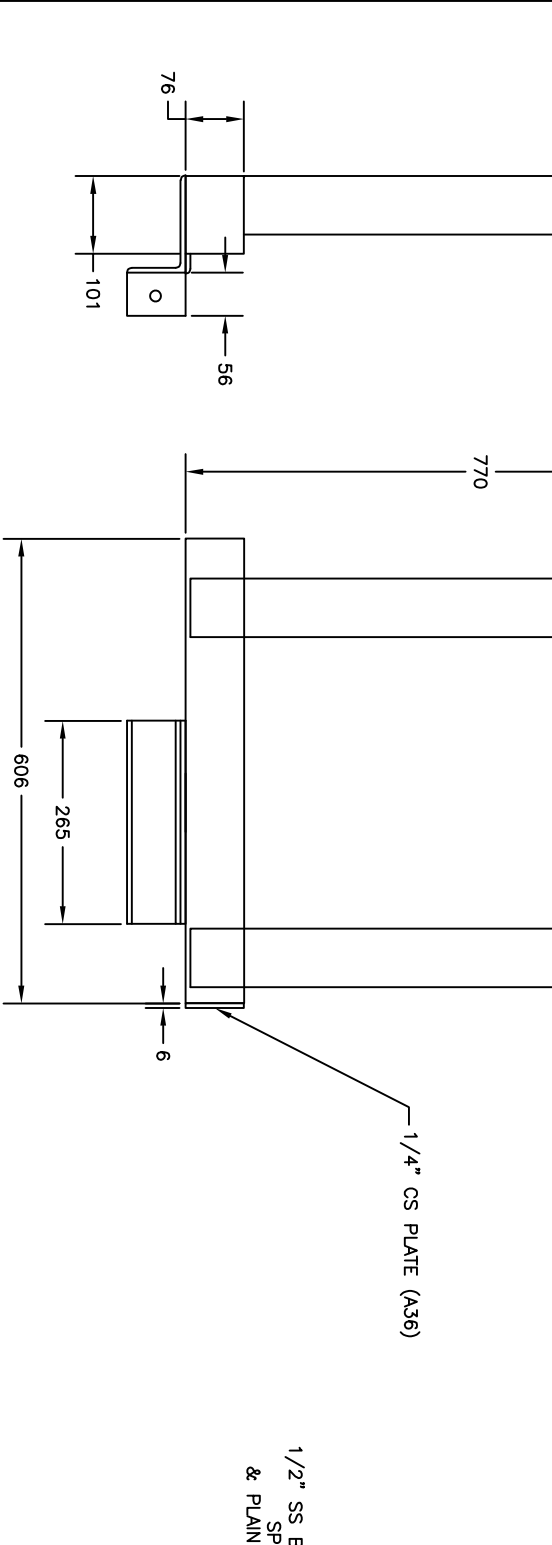
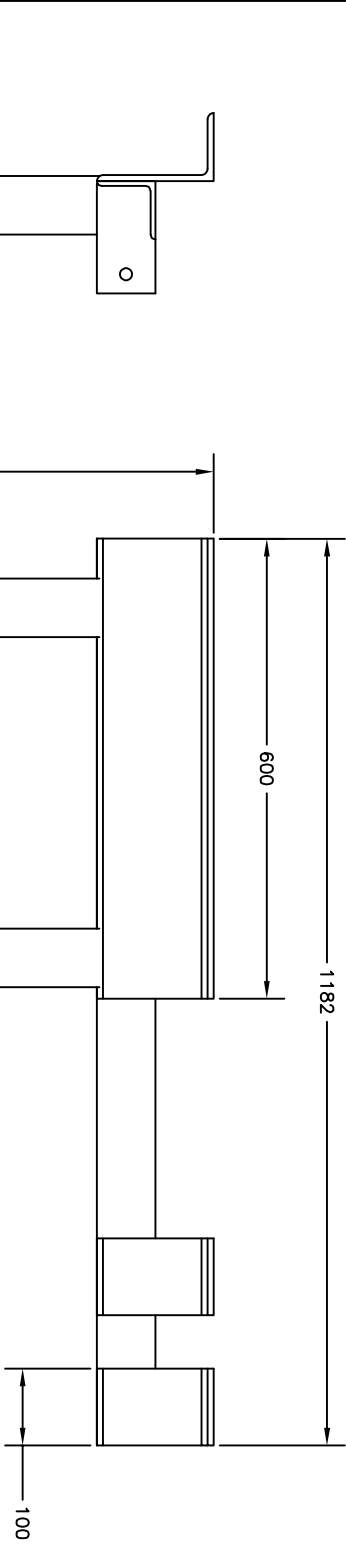
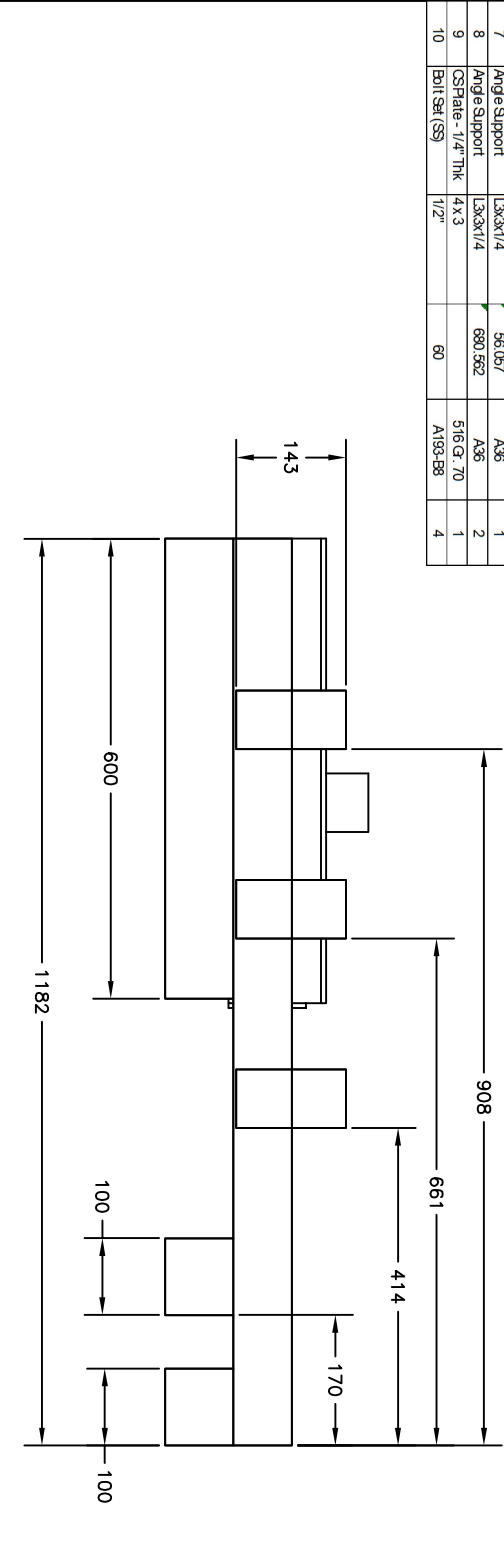
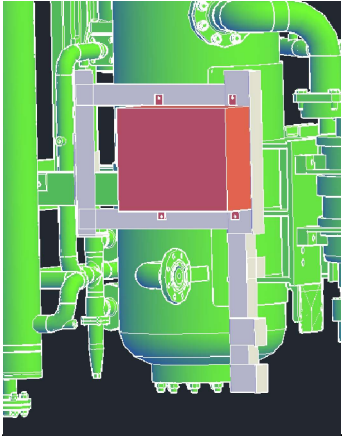
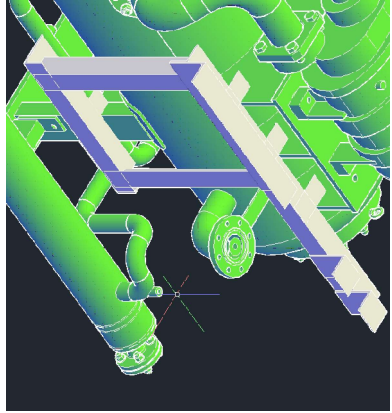


| Bill of Materials | | | | |
|-------------------|---------------------|---------------|-------------|-----------|
| Item | Description | Size (In) | Length (mm) | Qty |
| 1 | Angle Support | L3x3x1/4 | 143.109 | A36 3 |
| 2 | Angle Support | L3x3x1/4 | 1182.28 | A36 1 |
| 3 | Angle Support | L3x3x1/4 | 606.839 | A36 1 |
| 4 | Angle Support | L3x3x1/4 | 265 | A36 1 |
| 5 | Angle Support | L6x3-1/2x5/16 | 100.179 | A36 2 |
| 6 | Angle Support | L6x3-1/2x5/16 | 599.97 | A36 1 |
| 7 | Angle Support | L3x3x1/4 | 56.057 | A36 1 |
| 8 | Angle Support | L3x3x1/4 | 680.562 | A36 2 |
| 9 | CS Plate - 1/4" Thk | 4 x 3 | 516 Gr. 70 | A36 1 |
| 10 | Bolt Set (SS) | 1/2" | 60 | A193-B8 4 |



- NOTES:
1. ALL TAPPED BRANCHES TO INCLUDE TWO (2) GUSSETS LOCATED 90° APART.
 2. ALL SUPPORT WELDS SHALL BE CONTINUOUSLY WELDED.
 3. MATERIAL TEST REPORTS ARE REQUIRED.
 4. ALL MATERIALS USED SHALL BE NEW & UNUSED.
 5. ALL DIMENSIONS ARE IN MM.



| | | | | | | | |
|---|------|-----------------------|--------------|-------|-------|-------|-------|
| 2 | F | 31.10.24 | FOR APPROVAL | AJD | AJD | IES | SES |
| 1 | F | 04.09.24 | FOR APPROVAL | AJD | AJD | IES | SES |
| 0 | F | 30.07.24 | FOR APPROVAL | AJD | AJD | IES | SES |
| REV. STATUS | DATE | PURPOSE OF ISSUE | | PREP. | CHKD. | APPD. | AUTH. |
| BIO-TECHNICAL SERVICE INCORPORATION PACKAGE | | | | | | | |
| LOCATION: BIO-TECHNICAL SERVICE INCORPORATION PACKAGE | | | | | | | |
| VERSION: 1.000 | | | | | | | |
| Drawing No. | | Project No. | | SCALE | | | |
| MPE007-PT-RU0001A-SPRT | | ENER-MME-2024-100-001 | | | | | |
| DRAWING TITLE: PRESSURE TRANSMITTER TUBING SUPPORT (ALSO SUPPORTS JBD-A-RU0001A-01) | | | | | | | |
| REV. | | SHEET No. | | SIZE | | | |
| 2 | | 1 OF 1 | | D | | | |